

Large Office Occupancy Based Zone Lighting

"When it comes to saving energy, nothing is more frustrating than seeing our building at night with all the lights on."

Project Requirements

- Install 35 occupancy sensors to save energy in 40,000 square foot commercial office space

Wired - non ILLUMRA Solution

- 3 1/2 days - 2 electricians to pull wire
- Material costs - wiring and fasteners attached every 6 feet
- Loss of use of space during project
- Fine tuning sensor location requires moving wires and fasteners

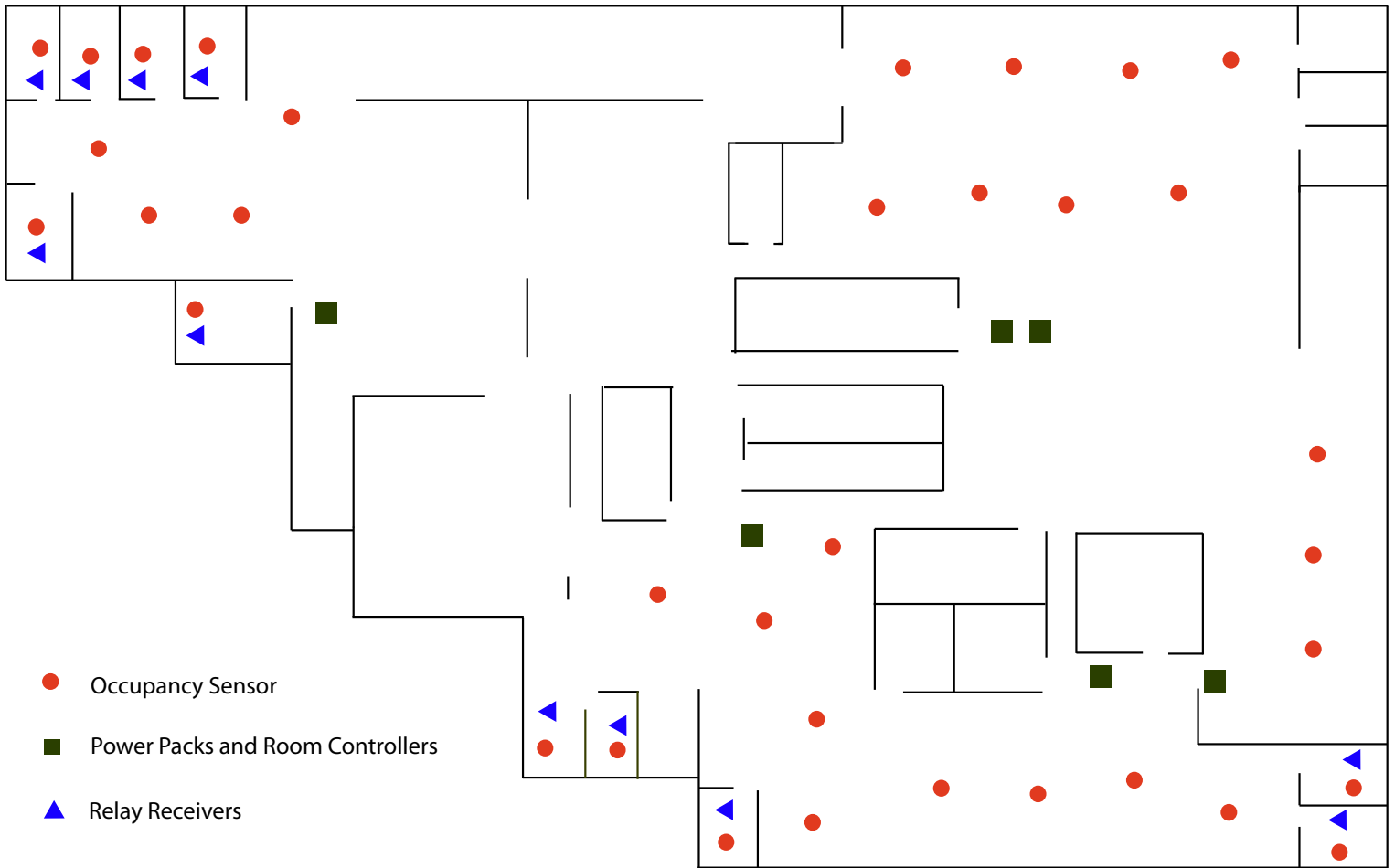
A Better Solution

The ILLUMRA Wireless Way

- 3 hours to complete job - 2 electricians
- No wiring or fasteners required
- No disruption of workplace during business hours
- 30-50% energy savings
- No batteries - no maintenance - solar powered
- Sensors easily relocated - no wiring changes



Large Office Occupancy Based Zone Lighting



Controls Needed for Project



Occupancy Sensor
E3T-SLICP
(Qty 35)



Room Controller
E3X-MRCFP
(Qty 7)



Power Pack
NWO-RHV-0D0
(Qty 7)



Relay Receiver
E3R-R12-3HOTP
(Qty 11)

Features:

- Occupancy and Light Sensors
- Zone control
- Optional integration to Building Management System

Benefits:

- Energy Savings
- Occupant comfort
- Low impact installation
- Reduce installation costs
- Easy reconfiguration