



Wall Plug Controller On/Off

The ILLUMRA Wall Plug On/Off Controller responds to signals from ILLUMRA BT series wireless switches to provide on/off control of a plug load. No installation is required and it is easy to use.



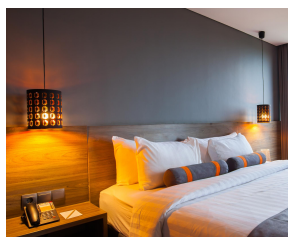
- On/Off control of any 10A load such as lights, fans, garbage disposal, pumps, etc. through a wall outlet.
- Save installation time & cost
- Link directly with wireless switches
- Plug into outlet and control with wireless switch.



Applications



Residential



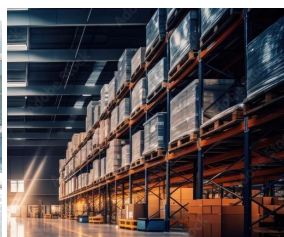
Hotels



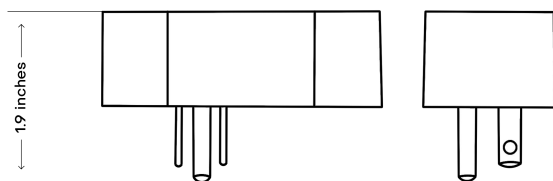
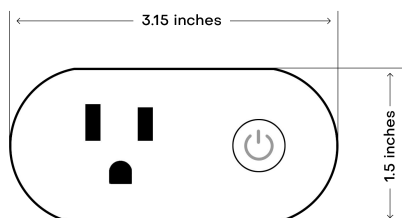
Classrooms



Offices



Warehousing



Specifications	BTT-R12-GP
Rated Voltage	120VAC 50Hz/60Hz
Rated Current	10A Resistive 3A LED, tungsten, ¼ HP motor
AC Frequency	50/60Hz
Idle Power	< 0.5W
Dimensions	3.15x1.5x1.9 in (80x38x48 mm)
Wireless	Bluetooth® (2.4GHz)
Operating Temp	14°F~104°F (-10°C~40°C)
Compliance	FCC (US) UL 60730

Ordering (example: BTT-R12GP)

BTT	-	R	12	GP
Bluetooth		R=On/Off Relay*	120 VAC	-

This device or certain aspects thereof is protected by at least one U.S. or International patent or has at least one such patent application pending

CAUTION: FOR INDOOR USE ONLY



Wall Plug Controller On/Off

COMPATIBILITY

Name	Model	Uses
Light Switches	BTT-SxAxx/ BTT-S4Bxx	Wireless control of luminaire via branch circuit
Key Card Switch	BTT-C2AWH	Wireless control of luminaire using guest key



BTT-SxAxx

BTT-C2AWH



BTT-S4Bxx

BID SPECIFICATION:

1. Compliance:
 - a. UL 60730 (safety)
 - b. FCC Part 15 Section b
2. Model BTT-R12GP:
 - a. Compatible with standard NEMA 5-15R outlet.
3. Electrical:
 - a. Supply Voltage: 100-125 VAC, 50/60 Hz.
 - b. Relay Output: Single, non-isolated SPST relay.
 - c. Loads:
 - I. 10A resistive at 100-125 VAC
 - II. 3A Electronic or LED Driver Loads
 - III. Motor Loads: 1/4 HP
 - IV. Inrush current of 10A max.
 - d. Radio: Bluetooth 2.4 GHz EnOcean. Other frequency radios are not acceptable.
 - e. Radio Range: Commercial Office Space: 30 ft (10 m).
4. Functional:
 - a. Switching on/off control for individual loads.
 - b. Wireless ILLUMRA switches.
 - I. Link 10 wireless devices in any combination of ILLUMRA switches.
 - c. Save configuration settings and linked device details in non-volatile memory.
 - d. Provide method of resetting to factory defaults.

FCC Warning

This device complies with part 15 of the FCC Rules. Operation is subject to the following two conditions: (1) This device may not cause harmful interference, and (2) this device must accept any interference received, including interference that may cause undesired operation.

Note: This equipment has been tested and found to comply with the limits for a Class B digital device, pursuant to part 15 of the FCC Rules. These limits are designed to provide reasonable protection against harmful interference in a residential installation. This equipment generates, uses and can radiate radio frequency energy and, if not installed and used in accordance with the instructions, may cause harmful interference to radio communications. However, there is no guarantee that interference will not occur in a particular installation. If this equipment does cause harmful interference to radio or television reception, which can be determined by turning the equipment off and on, the user is encouraged to try to correct the interference by one or more of the following measures:

- Reorient or relocate the receiving antenna.
- Increase the separation between the equipment and receiver.
- Connect the equipment into an outlet on a circuit different from that to which the receiver is connected.
- Consult the dealer or an experienced radio/TV technician for help.

Note: The Grantee is not responsible for any changes or modifications not expressly approved by the party responsible for compliance. Such modifications could void the user's authority to operate the equipment.